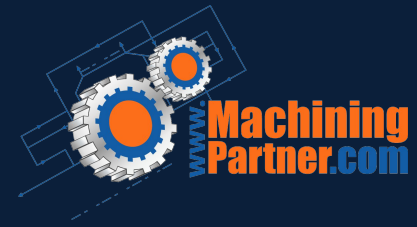


MACHININGPARTNER MASTERCAM TOOL LIST



Simple Configuration Guide (For questions or assistance, contact MachiningPartner.com support)

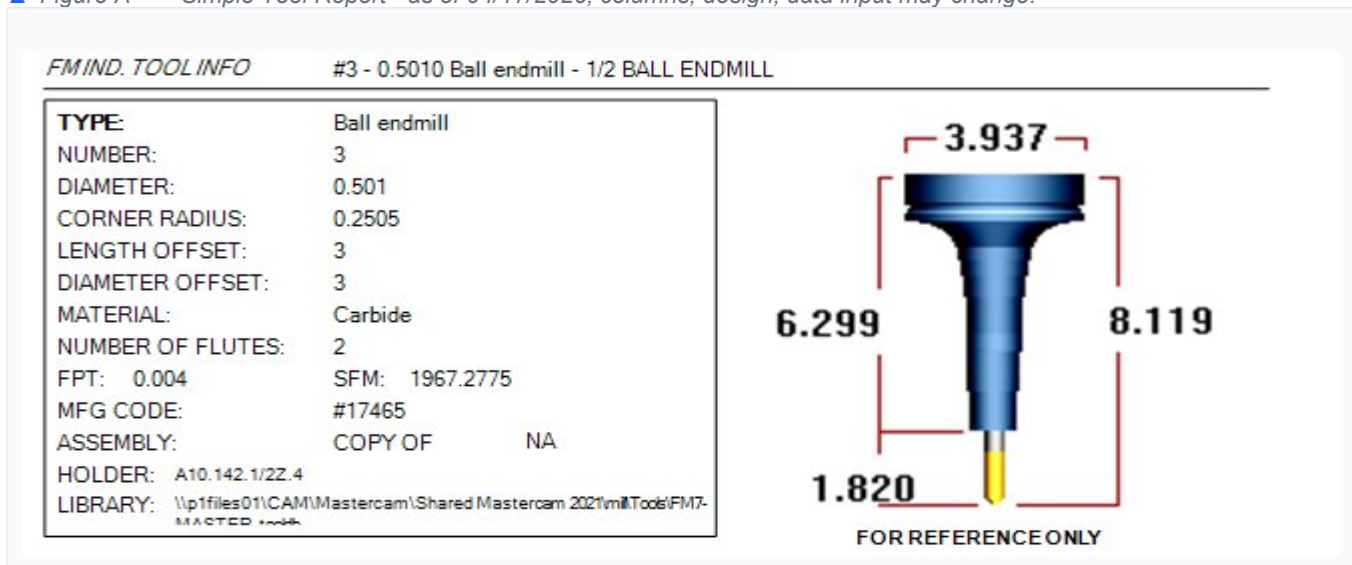
Custom Setup Sheets & Tool List Configuration

Step-by-step instructions for configuring report templates and exporting tool lists in Mastercam.
Please note these files will not override any default files.

DOCUMENT	Custom Setup Sheet & Tool List Configuration
AUTHOR	MachiningPartner.com
APPLICATION	Mastercam
PURPOSE	Configure report templates and tool list exports

T#	Tool Name	SIZE	FL	LOC	MCL	LOOH	RAD	HOLDER	MFG NAME	TOOL MFG #
108	SPOTTING DRILL 3/8-140 X 2-1/2OAL CARB	0.375	2	0.1875	0.1875	1.5	0.0	A10.142.3/8Z.4	DGI	NUTDNC3750CB1 40
207	DRILL 3/16 5XD CARB CLNT THRU	0.1875	2	0.973	1.768	1.8	0.0	H6C5A0016	Mitsubishi	MVS0476X05S060 DP1020
208	DRILL 3/16 40XD CARB CLNT THRU	0.1875	2	7.535	8.5	8.5	0.0	H6C4A0016	Mitsubishi	MVS0476X40S060 DP1020

▲ Figure A — Simple Tool Report - as of 04/17/2026, columns, design, data input may change.



▲ Figure B — Sample Detailed Tool Report as of 04/17/2026, columns, design, data input may change.
For questions or assistance, contact MachiningPartner.com support.

Overview

This guide walks you through configuring Mastercam to use custom setup sheet templates for your reports and tool lists. Once these settings are in place, you can export a complete tool list with a single click — either copying it via the snipping tool or saving it directly as an Excel (CSV) file.

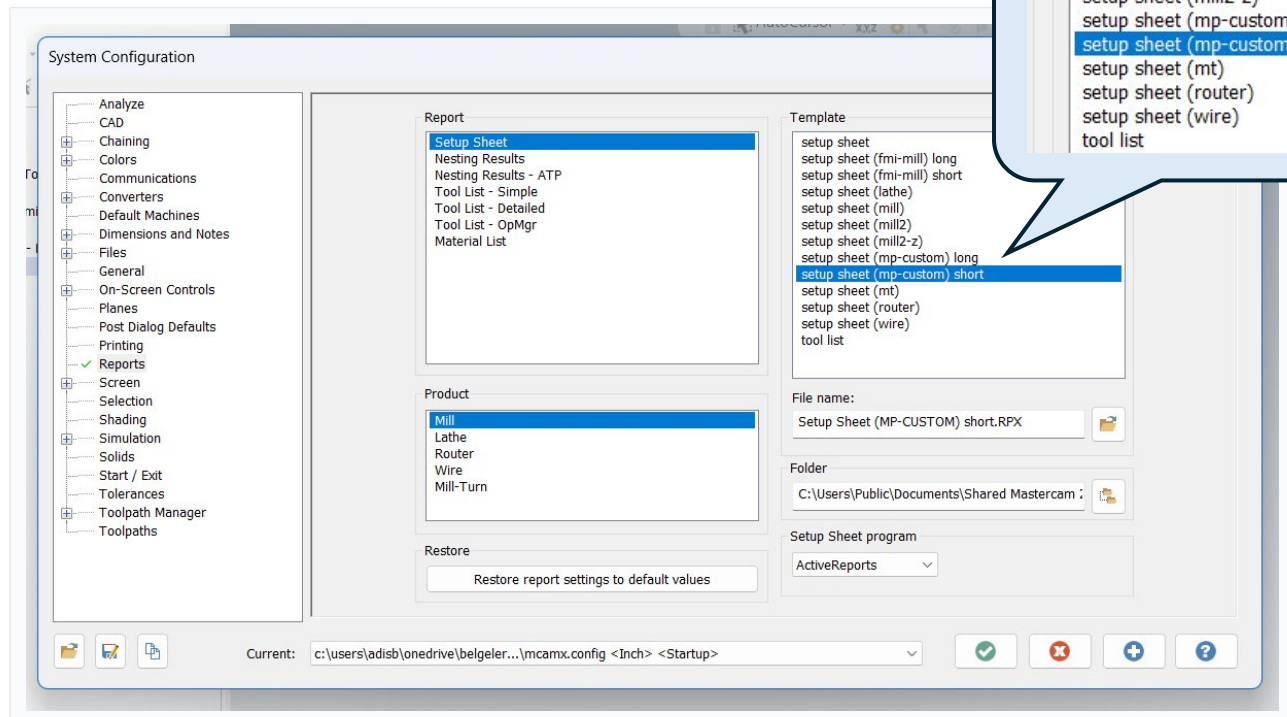
Getting There

NAVIGATION PATH

File → Configuration → Reports

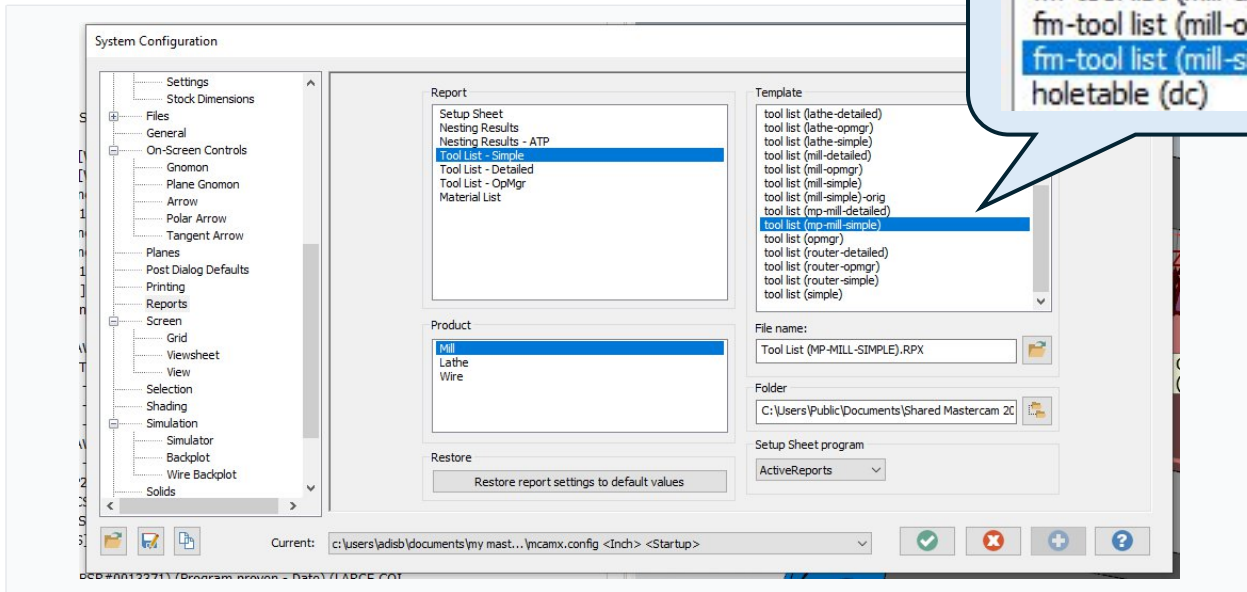
Configuration Steps

- Under the "Report" column, click "Setup Sheet" — then select **(mp-custom) short** under "Template". This chooses just the default version. When you create actual setup book you may choose another template. *For the longer version, select (mp-mill).* Refer to videos and "Installing-Custom-Setupsheets" for installation details.



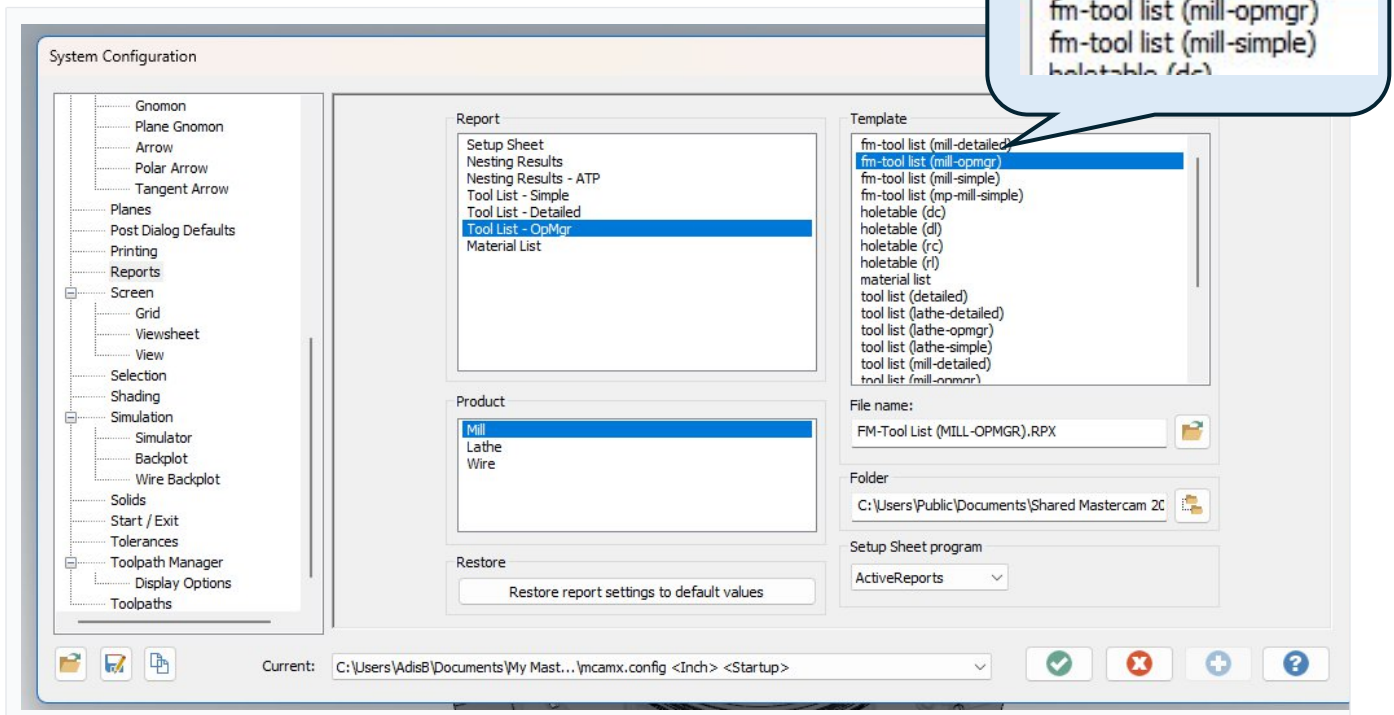
▲ Figure 1 — Set Sheet template selection in the Report column

2 Click "Tool List-Simple" and select **"fm-tool list (mill-simple)"**.



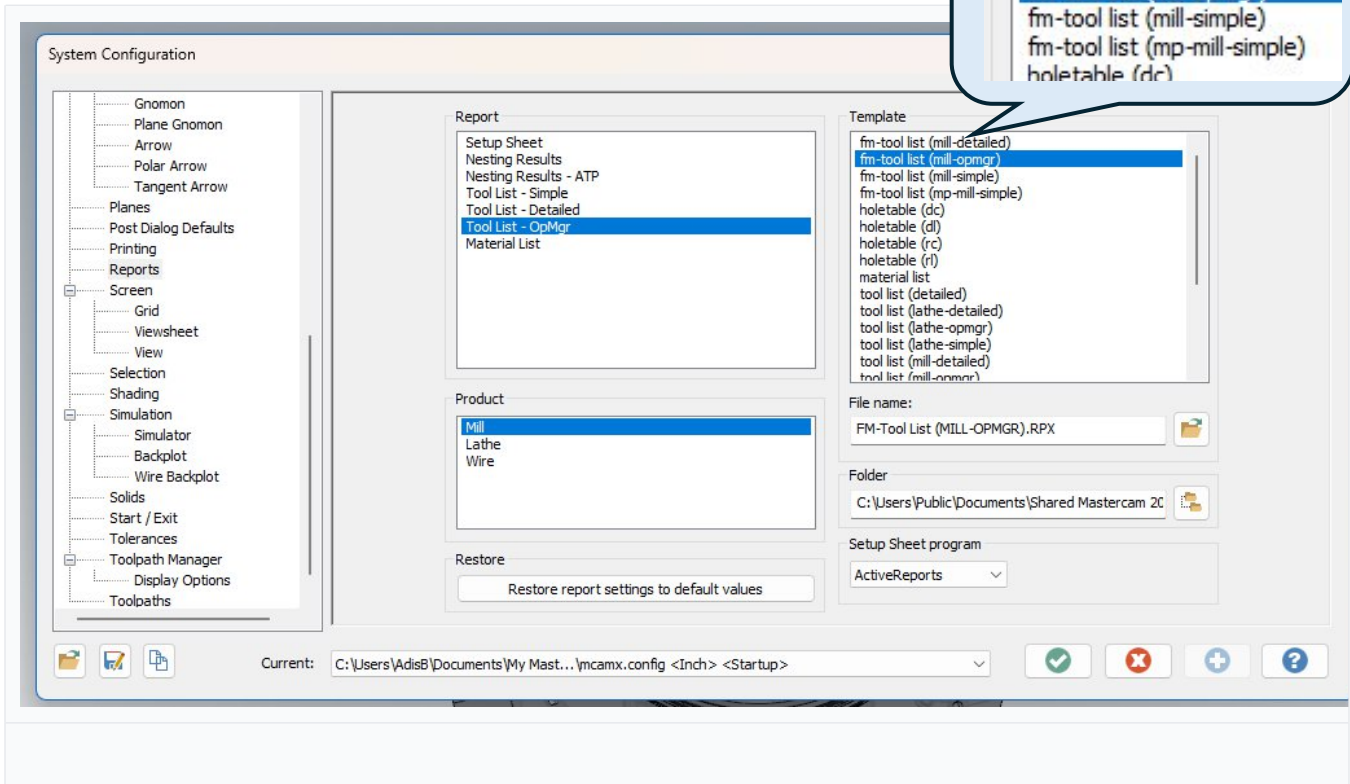
▲ Figure 2 — Tool List-Simple template selection

3 Click "Tool List-Detailed" and select **"fm-tool list (mill-detailed)"**.



▲ Figure 3 — Tool List-Detailed template selection

4 Click "Tool List-OpMgr" and select **"mp-tool list (mill-opmgr)"**.

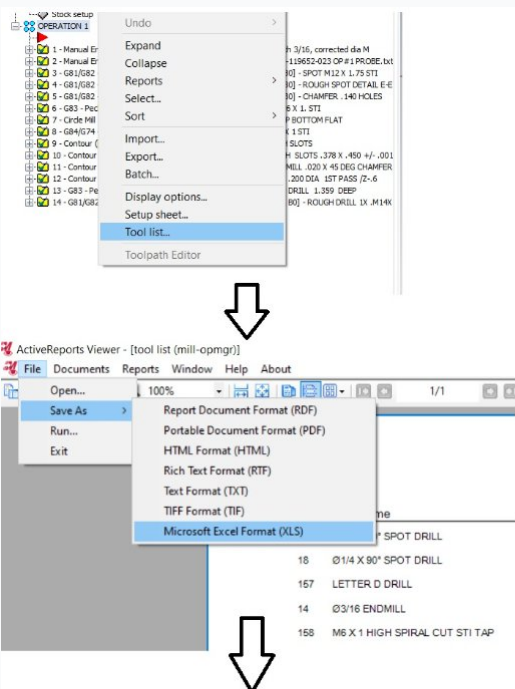


▲ Figure 4 — Tool List- operations list

5 Click green check mark to save and exit.

Exporting the Tool List to Excel

(Optional) After generating your tool list, it will automatically open in **ActiveViewer**. From there you can save it as a PDF or export it as a CSV/Excel file for further use.



The screenshot illustrates the steps to export a tool list to Excel. It shows the 'Tool List' menu in Mastercam, the 'ActiveReports Viewer' window, and the 'Save As' dialog box with 'Microsoft Excel Format (XLS)' selected. Below the dialog box, a preview of the exported Excel data is shown.

T#	Tool Name	C / H	SIZE	FL	LOC	MCL	LOOH	FMH	OFFSET	RAD / COMMENTS / MFG #
17	Ø3/8 X 90° SPOT DRILL		0.375	2	0.1875		1.0			SAMPLE2#342
18	Ø1/4 X 90° SPOT DRILL		0.25	2	0.125		1.0			
157	LETTER D DRILL		0.246	2	0.75		1.2			
14	Ø3/16 ENDMILL		0.1875	2	0.375		1.0			MFH#HVRSSAMPLE32
158	M6 X 1 HIGH SPIRAL CUT STI TAP		0.2362	1	1.1811		2.9528			
42	Ø1/4 END MILL		0.25	3	0.375		1.0			EDP 20105
15	Ø1/4 END MILL		0.25	3	0.75		1.1			EDP#031165
29	Ø1/4 X 90° EM		0.25	4	0.125		1.85			BASSETT 810019
158	0.125 EM R 015		0.125	4	0.1875		1.75			HARVEY 63108-C6
158	200 DIA STEP DRILL DR2384		0.2	2	1.0		3.0			DR 2384
25	Ø33/64 MITSUBISHI DRILL		0.5156	2	2.752		2.85			

▲ Figure 4 — Saving or exporting from ActiveViewer

NOTE

If a data field contains long text, the exported Excel file may split that content across multiple rows. You can edit the cell values directly in Excel after export to correct any formatting issues.